



**INSTRUCTION MANUAL**

MODEL: SST2000



**SUPER STUFFER™ ■ MODEL: SST2000**

Thank you for your recent purchase of the SUPER STUFFER™ balloon system!  
Our systems are designed to provide years of fun and trouble free operation.

**⚡ WARNING ⚡**

**No user serviceable parts inside. Any tampering with internal parts of the machine will void warrantee and is prohibited by the manufacturer. Please disconnect power source from the machine and cease use upon any sign of malfunctioning. Internal parts are of electrical nature and tampering by unauthorized personnel may result in injury or death.**

## TABLE OF CONTENTS

Description	Page
Service Procedure	1
Warranty	2
How to Assemble Your SUPER STUFFER™	3
How to care for your SUPER STUFFER™	4
Operating the SUPER STUFFER™ stuffing chamber	4
Preparing the Floral Arrangements	6
Using the SUPER STUFFER™ floral cylinder	7
How to care for your balloon creations	8

### IMPORTANT!

**PLEASE READ THIS ENTIRE MANUAL  
PRIOR TO OPERATING**

## SERVICE PROCEDURE

1.	In case of malfunction contact Surprize Enterprize Inc. at 1-800-363-4590.
2.	If the problem can not be rectified over the phone, you will be issued an RMA number (see below).
3.	Pack the system in its original shipping container. <b>DO NOT DESTROY BOX!</b>
4.	Print the RMA number in large legible letters on the box close to the shipping label.
5.	Please insure the product you are returning. You are liable for loss or damage during shipment.
6.	All warranty will be provided by our factory service center during normal working hours.

**SURPRIZE ENTERPRIZE INC.**  
6580 Davand Drive, Mississauga Ontario, L5T 2M3 Canada

Surprize Enterprize Inc. will ship any products, repaired or replaced under warranty, back to you via UPS ground, free of charge.

## SAFETY

**No user serviceable parts inside. Please disconnect power source from the machine and cease use upon any sign of malfunction. Internal parts are of electrical nature and tampering by unauthorized personnel may result in injury or death.**

## RETURNS

Any and all returns (warranty or not) must be authorized by Surprize Enterprize Inc. A Return Merchandise Authorization (RMA) number will be issued and must be clearly printed on the carton close to the label. Returns without an RMA number will be rejected and shipped back to the customer at the customer's expense.

**All products are to be shipped prepaid.**

**The warranty is extended to the original purchaser and is non-transferable.**

## INSPECT AND REPORT

Please inspect goods received for content and damage. It is our policy that any damage be reported to Surprize Enterprize Inc. within ten (10) days of receipt of goods.

## LIMITED WARRANTY

### WARNING:

**No user serviceable parts inside. Any tampering with internal parts of the machine will void warranty and is prohibited by the manufacturer.**

### WHAT IS COVERED:

For one year from the date of original purchase (two years on the motor), the manufacturer will provide, free of charge, parts and labor to repair or replace, at its discretion, any part or all of the machine that fails because of a design or manufacturing defect.

Save Proof of original purchase such as your sales slip or purchase order, with machine serial number to establish warranty. SURPRIZE ENTERPRIZE INC. will then replace or repair the defective part or entire machine, at its discretion.

### WHAT IS NOT COVERED:

This warranty does not cover defects resulting from accidents, alterations, failure to follow instructions, misuse, fire, flood, and acts of God.

We will not be liable for implied warranties, including those of fitness for a particular purpose or merchantability. We will not pay for loss of time, inconvenience, loss of use of the product, or property damage caused by this product or its failure to work, or any other incidental or consequential damages.

#### **IMPROPER ASSEMBLY:**

If you have an assembly problem, contact your dealer. You are responsible for the proper assembly of the machine.

#### **IMPROPER USE:**

Failure of the product if it is used for other than its intended purpose.

#### **IMPROPER HANDLING:**

Damage to product caused by your handling, shipping, or moving of the product from location to location is not covered.

MODEL AND SERIAL NUMBER

DATE OF PURCHASE

## HOW TO ASSEMBLE YOUR SUPER STUFFER™

1. Please read the Instruction Manual prior to assembly of your SUPER STUFFER™ machine.
2. SUPER STUFFER™ is shipped with the lid packed inverted in the chamber base. Take the lid from the box and unpack it.



3. Remove the SUPER STUFFER™ from the box and unpack it.
4. Simply place the lid right side up on the chamber base as shown.



5. Slide the hinge pin provided through the holes in the lid and body as shown. Fasten with the end cap also supplied.
6. Plug power cord into power inlet of the SUPER STUFFER™ and wall socket.





## CARE TIPS

Clean your SUPER STUFFER™ with warm water and a soft cloth. Use only mild soaps sparingly.

**Do not use window cleaners.**

## OPERATING THE SUPER STUFFER™ STUFFING CHAMBER

1. Expand the balloon over the SUPER STUFFER™ collar.

### 1.1. MANUALLY:

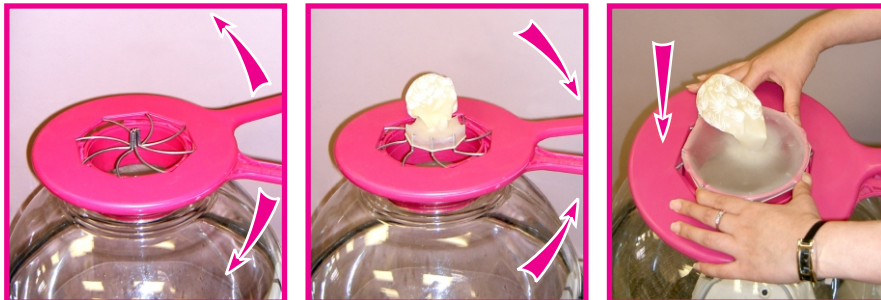
The SUPER STUFFER™ collar is injection molded with nubs to make it easier for a balloon neck to be expanded over the opening/collar by hand.

Please follow the pattern in the diagram below to manually expand the balloon over the SUPER STUFFER™ collar.



### 1.2. WITH THE OPTIONAL BALLOON EXPANDER:

- 1.2.1. Spread the handles of the balloon expander apart so the tangs come together. Place a 18" balloon over the tangs and proceed to bring the balloon expander handles together. Watch the balloon neck expand.
- 1.2.2. Holding the balloon expander handles together place the expanded balloon neck completely over the SUPER STUFFER™ opening/collar. However do not push down.
- 1.2.3. Release the expander handles allowing the balloon neck to grip the chamber opening. Press down on the body portion of the expander to completely release the balloon from the expander and on to the SUPER STUFFER™ collar. Remove the expander.



2. Press the switch to inflate the balloon into the chamber. Be sure the balloon inflates completely touching the bottom and creating a seal about the inner lip at the top of the chamber.
3. Insert the protective sleeve to protect the balloon and facilitate insertion of gifts and articles into the balloon.



4. Fill the balloon with shredded paper, plush toys, smaller size balloons or any other stuffing of your choice.
5. Once the arrangement is complete, remove the protective sleeve and balloon neck from the SUPER STUFFER™ opening.
6. Twist the neck of the balloon and close it with a balloon clip or disc.



7. Press down on the balloon to release the pressure within the chamber.
8. Hinge the lid open.
9. Add effects such as ribbon or bow and remove the balloon from the chamber.



**CONGRATULATIONS!**

You've just created a balloon gift that will bring happiness to anyone's day !



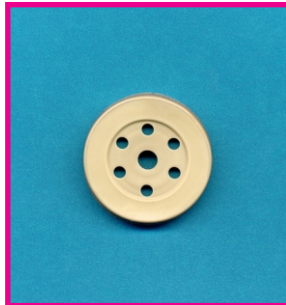
## PREPARING THE FLORAL ARRANGEMENTS

1. Fill prescribed water vial with water and floral preservative mixture. Make sure to allow a space of approximately 1/4" from the top of the vial, (this will allow the water level to rise without spilling). Place a cap on the vial. **Water should contain floral preservative.**
2. Though the water vial cap is manufactured with one centre hole, other holes may be made to accommodate specific arrangements.
3. The chart below provides the recommended corresponding flower arrangement, water container, and vase. In some cases the balloon is sealed to a water vial however it may be placed into a bud vase for support and esthetics. Place sand or water into the bud vase for added weight and stability before inserting the arrangement.
4. Please take note of the following tips to help when preparing the floral arrangements.
  - ◆Refer to the Floral Sizing Diagram.
  - ◆The tallest flower should be no taller than 15" or 37cm.
  - ◆Stagger flower heights as shown in the Floral Sizing Diagram to facilitate insertion of arrangement into the SUPER STUFFER™ floral cylinder.

**NOTE:**

ALWAYS CUT FLOWER STEMS UNDER WATER TO PREVENT AIR POCKETS IN THE STEM.

5. Flowers, fern and baby's breath may be inserted in the center hole of the vial cap or holes may be punctured in the cap to suite the arrangement.



Number of flowers	Corresponding container	Appropriate vase
1	30cc Water Vial	6" Bud Vase
1 to 3	30cc Water Vial	6" Bud Vase
1 to 3	Belly Vase	N/A
3 to 6	50cc Water Vial	7 1/2" Bud Vase

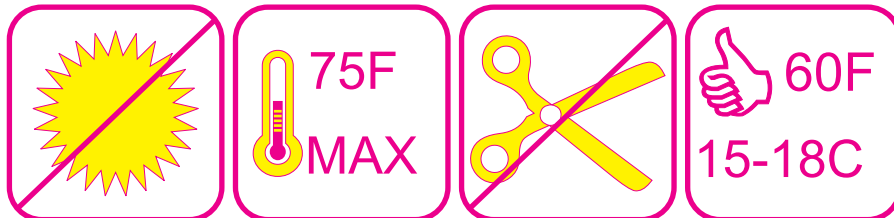




7. Tape may be around the balloon lip preventing it from unraveling.
8. Before placing the vial into a vase or container be sure the fit is snug. Place water or sand in the bottom of plastic vases to prevent the arrangement from tipping.
9. Wrapping tape and/or paper towel around the vial is only necessary if the vial fits loosely in the vase.
10. Decorate with bow, ribbon, teddy bears etc.



### HOW TO CARE FOR YOUR BALLOON CREATIONS



Protect from direct sunlight.

If possible, avoid temperatures above 75 F.

Keep away from sharp objects.

Ideal temperatures: cool 60 F (15-18 C)

#### NOTE:

- Balloons will become cloudy caused by condensation inside the balloon when exposed to temperature change; however this will clear up within one hour.
- Balloons will expand in hot temperatures, i.e. if vehicle is left sitting for a period of time in the sun. Therefore, it is a good idea to deflate the balloon slightly ones the arrangement is finished. This will relieve a stress on a balloon membrane.
- Placement of the finished Balloomer arrangement in a cool environment at night will prolong its pleasurable life.
- Oxidization is powdery coating, which occurs when the balloon is exposed to hot humid environment. A coating of Balloon Shine or Sun of a Gun will prolong the life of the balloon arrangement.

## USING THE FLORAL CYLINDER

1. Extend the stuffing cylinder and insert the floral arrangement until it is completely in the tube.



2. Choose a balloon that corresponds to the floral arrangement (see chart on previous page).
3. Place the balloon over the stuffing cylinder.

### 3.1. MANUALLY:

- 3.1.1. Stretch the balloon lip large enough to place it around the mouth of the stuffing cylinder.

### 3.2. WITH THE BALLOON EXPANDER:

- 3.2.1. Spread the handles of the balloon expander apart.
- 3.2.2. Place the balloon neck over the tangs and bring the handles together until the expanded portion of the balloon neck fits over the stuffing cylinder.
- 3.2.3. By pushing the expander down remove the balloon from the expander tangs so that it adheres to the stuffing cylinder.



- 3.2.4. Remove the balloon expander from the stuffing cylinder.
4. Inflate the balloon by pressing the switch at the rear of the SUPER STUFFER™, holding the balloon on the stuffing cylinder with your forefinger and thumb.
5. Once the balloon is inflated lower the cylinder maintaining a grip on the balloon neck.
6. Now pinch the balloon between the forefinger and thumb until you grip the water vial/vase. With the other hand roll the neck of the balloon up allowing the balloon to snap around the vial/vase.

### NOTE:

At this point, pull the lip away from the vial to release some air. In warm and hot weather, this allows the balloon to expand and lessens the chance of it bursting.



## **SURPRIZE ENTERPRIZE INC.**

6596 Davand Drive, Mississauga Ontario, L5T 2M3 Canada

■ Tel: 905-795-1050 ■ Fax: 905-795-1057 ■ Toll Free: 800-363-4590  
■ [www.surprise-enterprize.com](http://www.surprise-enterprize.com) ■ [info@surprise-enterprize.com](mailto:info@surprise-enterprize.com)



**BALLOOMERS™, BALLOOMERS PLUS™,  
PUFF'N STUFF™ and SUPER STUFFER™  
are trademarks of  
SURPRIZE ENTERPRIZE INC.**

CND Patent #1,237,699  
CND Patent #1,262,118  
US Patent #4,811,842  
US Patent #4,970,844

Copyright © 1997-2005 Surprise Enterprize Inc. All rights reserved.